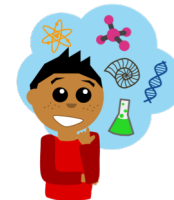


# Science Learning Options

Choose 1 activity to do each day.



## Nature Micro-Hike Living and Non-Living Things

Slowly walk around your yard for 10 minutes. What do you kilo (observe)? Make a list of all the living and non-living things you observed (nothing man-made). Which item was the most interesting? Why?

## Weather Observations Tracking the weather

Kilo the weather 2 times each day – 1 time in the morning and 1 time in the afternoon – during the month of April. Record your observations. (Make sure to kilo it at the same time each day). What weather patterns did you notice in April? Explain.

## 'I'iwi Bird Compare/Contrast <https://abcbirds.org/bird/iwi/>

Watch the video clip about the 'I'iwi bird. Read the text with an 'ohana member. Discuss new learnings, connections, and questions you have. Then, create a Double Bubble to show how an 'I'iwi adult and juvenile are alike and different. Discuss how their traits help them to survive in their habitat.

## Nature Micro-Hike Textures

Create a list of at least 5 different texture words (for example, smooth, rough). Take a "texture" walk outside. Find different natural objects (not man-made) to match your texture words. Draw and label a picture of each object next to your texture words. What do you wonder about those objects?

## Soil Observations Soil Samples

Dig up a small patch of dirt from your yard. Spread it out on a sheet of white paper and examine it. What do you observe? Dig up another small patch of dirt from a different location in your yard. Spread it out on a second sheet of white paper. Compare and contrast the two soil samples. How are they alike and different? Why?

## Hawai'i – Moku o Keawe Our Island Home [kumukahi.org](http://kumukahi.org)

(Click on the link. Go to videos. Click on the Hawai'i video) Watch the video.  
Write 3 new things you learned. Write 2 connections you made. Write 1 question you have. Research to find out the answer to your question.

## Plant Observation Plant traits

Kilo a plant in your yard (or an indoor plant). Draw, color, and label a picture of that plant. Be detailed in your drawing. What do you wonder about this plant? Write 2 questions about what you are wondering. (Who, What, When, Where, Why, How)? How might you learn more about this plant?

## Mystery Science – Part 1 "How Is A Rainbow Made"

<https://mysterydoug.com/mysteries/rainbow/#slide-id-8205>

Share with an 'ohana member what you think you know about rainbows. Then, use the link to watch the video. Write 2 new things you learned about how rainbows are made.  
Write one thing you still wonder about rainbows.

## Mystery Science - Part 2 "How Is A Rainbow Made"

<https://mysterydoug.com/mysteries/rainbows#slide-id-8205>

Reread the 2 things you learned about rainbows and the wondering you had. If you have the materials, do the extension activity to make your own rainbow at home. If you don't have those materials, how else might you make a rainbow? Test out different materials you have at home. Which materials worked? Which materials didn't work? Why?



## Nature Micro-Hike Living and Non-Living Things

Make a list and quick sketch of the all living and non-living things you observed outside (nothing man-made).

Living	Non-living

Which item was the most interesting? Explain why.





## Nature Micro-Hike Textures

Create a list of at least 5 different texture words (for example, smooth, rough). Take a "texture" walk outside. Find different natural objects (not man-made) to match your texture words. Draw and label a picture of each object next to your texture words.

	Texture word	Object 1	Object 2
	Example <b>Rough</b>	 Tree bark	
1			
2			
3			
4			
5			



## Plant Observation

### Plant traits

Kilo a plant in your yard (or an indoor plant). First, draw, color, and label a picture of that plant using scientific colors. Then, write 2 nīnau (questions) about what you are wondering. (Who, What, When, Where, Why, How)?

Draw, color, label.

Nīnau:

1. \_\_\_\_\_

2. \_\_\_\_\_



## Weather Observations Tracking the weather

Kilo the weather 2 times each day – 1 time in the morning and 1 time in the afternoon – during the month of April. Record your observations. (Make sure to kilo it at the same time each day). What weather patterns did you notice in April? Explain to an Ōhāna member.

### April

	Monday	Tuesday	Wednesday	Thursday	Friday
<b>Morning</b>	6	7	8	9	10
<b>Afternoon</b>					
<b>Morning</b>	13	14	15	16	17
<b>Afternoon</b>					
<b>Morning</b>	20	21	22	23	24
<b>Afternoon</b>					
<b>Morning</b>	27	28	29	30	
<b>Afternoon</b>					



## Soil Observations Soil Samples

Dig up a small patch of dirt from your yard. Spread it out on a sheet of white paper and examine it. What do you observe? Dig up another small patch of dirt from a different location in your yard. Spread it out on a second sheet of white paper. Compare and contrast the two soil samples. How are they alike and different? Why?

The soil samples are alike because they both have \_\_\_\_\_

\_\_\_\_\_.

The soil samples are different. One sample \_\_\_\_\_

but the other sample \_\_\_\_\_.



## Mystery Science – Part 1

### “How Is A Rainbow Made”

Share with an ‘ohana member what you think you know about rainbows. After watching the video...  
Write 2 new things you learned about how rainbows are made.  
Write 1 thing you still wonder about rainbows.

Two new things I learned...

1. \_\_\_\_\_

\_\_\_\_\_

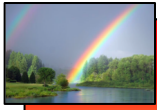
2. \_\_\_\_\_

\_\_\_\_\_

One thing I wonder about...

1. \_\_\_\_\_



\_\_\_\_\_



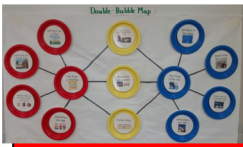
## Mystery Science – Part 2

### “How Is A Rainbow Made”

Reread the 2 things you learned about rainbows and the wondering you had. If you have the materials, do the extension activity to make your own rainbow at home. How else might you make a rainbow? Test out different materials you have at home. Draw and label the materials you used. Check “yes” if the materials made a rainbow. Check “no” if the materials did not make a rainbow. **Think:** Why did they materials work? Why did the materials not work?

<b>Materials I tested (draw and label)</b>	<b>Yes!</b> They made a rainbow. <b>Think:</b> How come the materials worked?	<b>No!</b> They did not make a rainbow. <b>Think:</b> How come the materials didn't work?
 <p>plastic block      clear cup with water      flashlight</p>		





# 'I'iwi Bird

## Compare and Contrast

Create a Double Bubble to show how an 'I'iwi adult and juvenile are alike and different. Discuss how their traits help them to survive in their habitat

**Different**

**Same**

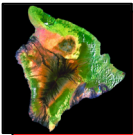
**Different**



'I'iwi adult



'I'iwi juvenile



## Hawai'i – Moku o Keawe Our Island Home

Write 3 new things you learned. Write 2 connections you made. Write 1 question you have. Research to find out the answer to your question.

Three new things I learned...

- 1) \_\_\_\_\_
- 2) \_\_\_\_\_
- 3) \_\_\_\_\_

Two connections I made...

- 1) \_\_\_\_\_
- 2) \_\_\_\_\_

One question I have...

- 1) \_\_\_\_\_