

Structure, Function, and Information Processing

NGSS LS1.A. All organisms have external parts. Different animals use their body parts in different ways to see, hear, grasp objects, protect themselves, move from place to place, and seek, find, and take in food, water and air. Plants also have different parts (roots, stems, leaves, flowers, fruits) that help them survive and grow.

Phenomena: Backyard Animals

What to do: What's in your yard? 10 minutes nature hunt!

Go into your yard to see what kind of animals live there. Write down what you find and make a simple drawing of it. Tell something you noticed about it.

Be sure to tell an adult before you go outside!

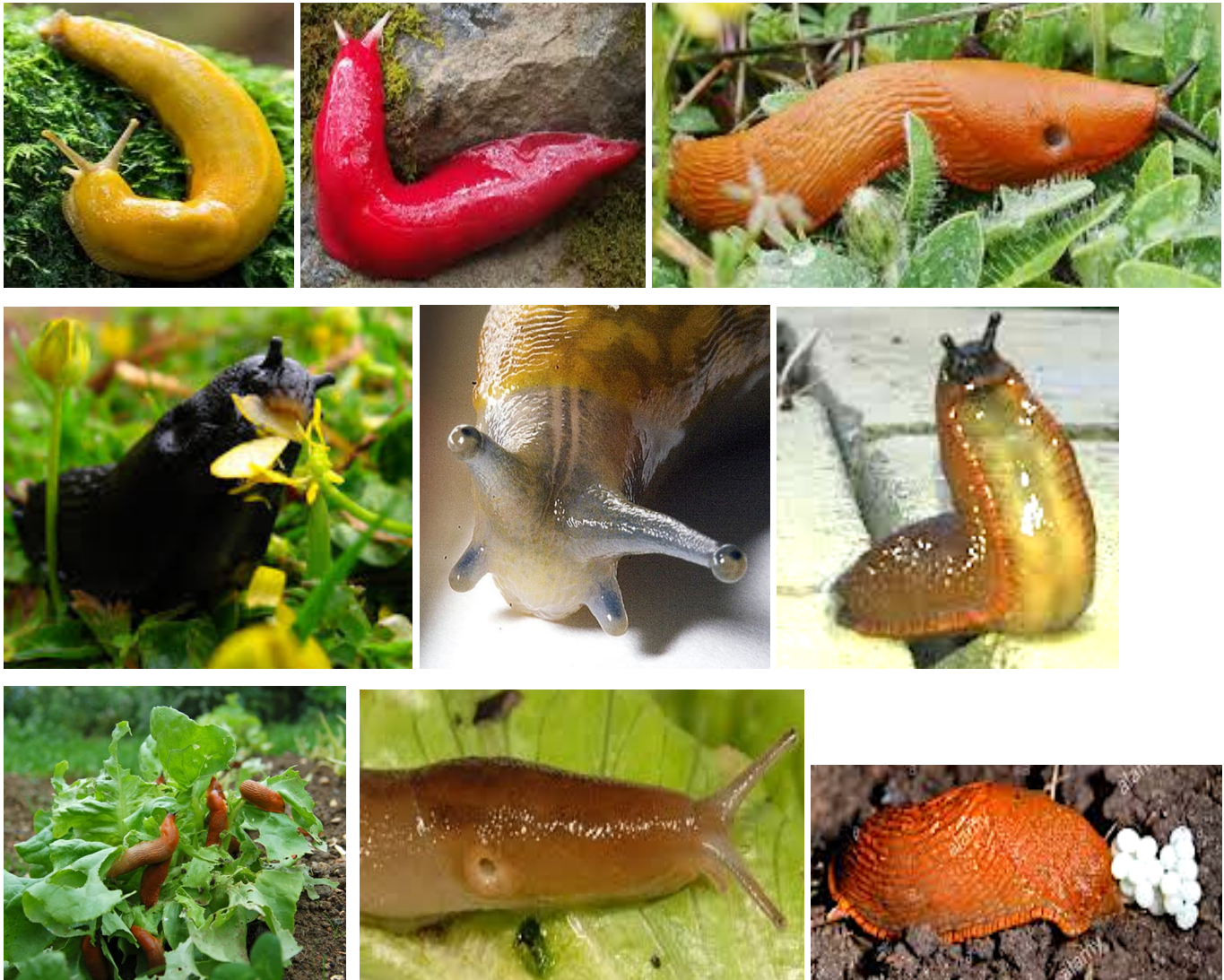
Animal	Drawing	👁️👁️ See ~ Maka nānā
fly		goes fast, 2 wings, shiny green body

I learned _____

Structure, Function, and Information Processing

NGSS **LS1.A.** All organisms have external parts. Different animals use their body parts in different ways to see, hear, grasp objects, protect themselves, move from place to place, and seek, find, and take in food, water and air. Plants also have different parts (roots, stems, leaves, flowers, fruits) that help them survive and grow.

Phenomena: Slugs



I see ~ Maka nānā 🙄🙄 I notice. I observe.

1) _____

2) _____

3) _____

I think ~ Mana`o Slugs _____

Next read this page...

Phenomena: Slugs



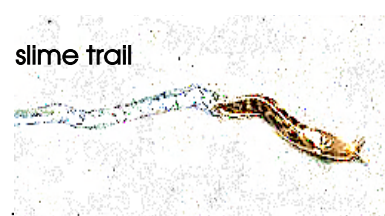
banana slug



kaputar slug



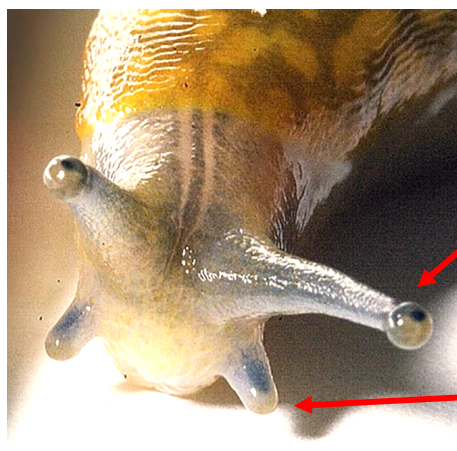
leopard slug



slime trail

The slime comes out from under the head to the tail so it won't get hurt moving on the ground.

Slugs have a **slimy skin**. It makes **slime** so it won't dry out. The slime makes it hard for predators to pick them up and also tastes bad.



Slugs have 4 **tentacles** or feelers on their heads.

The longer top feelers have **eyespots** on their tips that can sense light.

The shorter feelers on the bottom **smell** and **taste** for finding food.

Slugs can pull their feelers in and out. If a feeler is lost it will grow back.



The hole in its side is for breathing air. Slugs can open and close the hole.



Slugs lay eggs in the dirt. Tiny slugs hatch from the eggs.



Do not pick up or touch slugs. They can make you very sick!

I learned slugs _____

Here are some photos of slugs. Make a drawing of a slug!
Look carefully at its colors and body parts.



Arion slug



This slug drops its tail, like geckos, to fool predators.

Blue-Gray
Taildropper
slug



Banana slug
This is one kind there are others.



Leopard slug