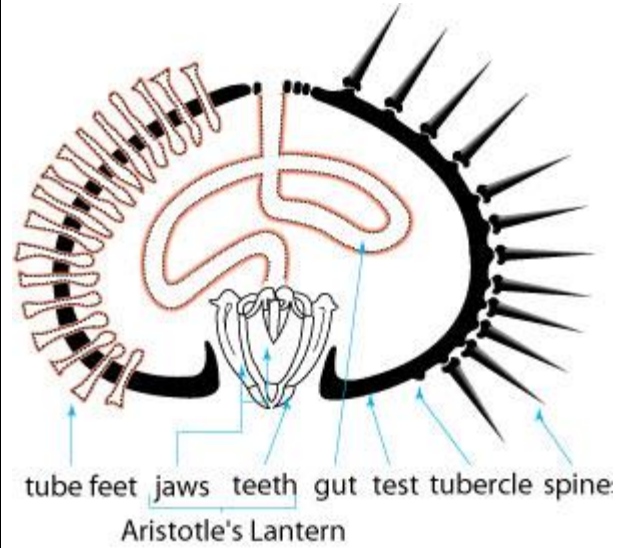


## Urchin Mini Lesson

Ka Manawa (Time)	Ke Kumuhana (Topic/Focus)	Ka Hana (Task)
1:00 - 1:20 pm (20 min)	<p>Wana observations</p> <p>Open a new tab to open video</p>	<p>Watch Wana video and take notes:</p> <p>Kilo:  <a href="https://www.youtube.com/watch?v=ak2xqH5h0YY">https://www.youtube.com/watch?v=ak2xqH5h0YY</a></p> <p>Take notes on the jellyfish using a tree map</p> <ul style="list-style-type: none"> <li>• Structures</li> <li>• Functions</li> <li>• Diet</li> <li>• Threats</li> </ul> <p>Independent read:  <a href="https://www.waikikiaquarium.org/experience/animal-guide/invertebrates/echinoderms/wana/">https://www.waikikiaquarium.org/experience/animal-guide/invertebrates/echinoderms/wana/</a>  <a href="https://a-z-animals.com/animals/sea-urchin/">https://a-z-animals.com/animals/sea-urchin/</a></p> <p>Additional exploration:  <a href="https://www.youtube.com/watch?v=D3W4OCnHyCs">https://www.youtube.com/watch?v=D3W4OCnHyCs</a>  <a href="https://www.marinelifephotography.com/marine/echinoderms/urchins/urchins.htm">https://www.marinelifephotography.com/marine/echinoderms/urchins/urchins.htm</a>  <a href="https://www.youtube.com/watch?v=oljZbs5haaY">https://www.youtube.com/watch?v=oljZbs5haaY</a></p>
1:20 - 1:30 (10 min)	Quick Write	What I learned about the Wana.
1:30 - 1:40 pm (10 min)	<p>Wana scientific drawing</p> <p>*Present guided drawing if there is confusion or concern from haumāna</p> <p>Make your own model</p>	Draw and label Urchin with its anatomy (only the highlighted parts)





1:40 - 1:55 pm  
(15 min)

Wana drawing (does not need to be completed within 15, just need to start)

Add informational details, including colors, habitat drawings, interesting facts

1:55-2:00 pm  
(5 Min)

Wana share out

Share out on padlet or google classroom.