

SCHOOL YEAR 2020-2021



KAMEHAMEHA SCHOOLS®

SCHOOL COLLABORATOR INFORMATION SESSION



Kamehameha Schools

KIPONA PROGRAM

- PROGRAM GROWTH
- PROGRAM UPDATES
- KS PREK 12 TEAM

PROGRAM GROWTH

- Grade K entry
- 49 schools
- 240 keiki

12 years ago

- 80 schools
- 1000 awarded keiki

Today

- K-12 program
- 1200 awarded keiki

2020-2021



Kamehameha Schools

PROGRAM UPDATES

- 2019-2020 PROGRAM INFORMATION
- 2020-2021 SCHOOL APPLICATION
- SCHOOL EXPECTATIONS

2019-2020 PROGRAM INFORMATION

APPLICANT ELIGIBILITY REQUIREMENTS

- State of Hawai'i Resident
- Entering grade K, 6, 7, or 9 (statewide)
- Enroll at a Kipona participating private school.
- Complete the KS Admissions process
- Complete the KS Financial Aid Assessment

APPLICATION PROCESS

- Two Part Process for **new** applicants (Part 1)
- Renewal applicants complete part 2 only
 - KS Financial Aid Assessment
- Award Notifications:
 - Renewal, 6, 7, 9 – March 29, 2019
 - Grade K – April 26, 2019

SCHOOL COLLABORATOR STEPS

Enrollment Confirmation

- KS School Portal
- Opens June 2019
- Closes August 2019

Provide Service Learning Opportunities

- Kipona 'ohana requirements

Keep KS Informed of Changes

- Enrollment changes
- Subsidy adjustments

Kipona 'Ohana requirements

K-3

10 service
hours

4-5

15 service
hours

6-12

20 service
hours

Deadline:
Categories:

June 30 each year
Papahana (workshop)
Ike/Nohona (Hawaiian knowledge & culture)
E kōkua kākou (Community Service)

Total service hours can be allocated among these three categories.

2020-2021 SCHOOL APPLICATION

Shortened
Application
Window

Opens
January 24, 2019

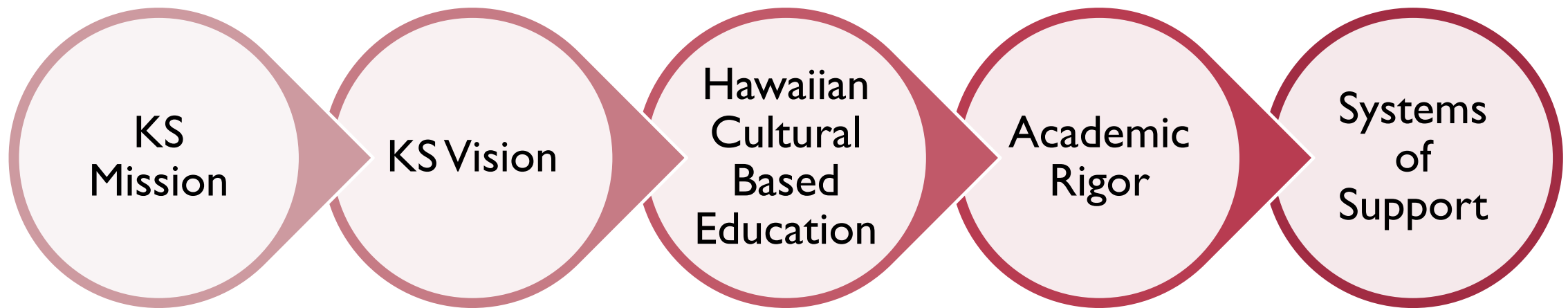
Closes
February 28, 2019

Kipona participation
requirements

KS Strategic
Alignment

**Notification of
participation
August 2019**

KS STRATEGIC ALIGNMENT





KS Mission

*Kamehameha Schools mission is to
Fulfill Pauahi's desire to create
educational opportunities in perpetuity
to improve the capability and well-being
of people of Hawaiian ancestry.*

KS Vision

KS is grounded in Christian and Hawaiian values embraced by Pauahi.

Aloha

To have compassion and empathy

Imi Na'auao

To seek wisdom

Mālama

To care for and protect

'Ike pono

To do what is right

Kuleana

To take responsibility

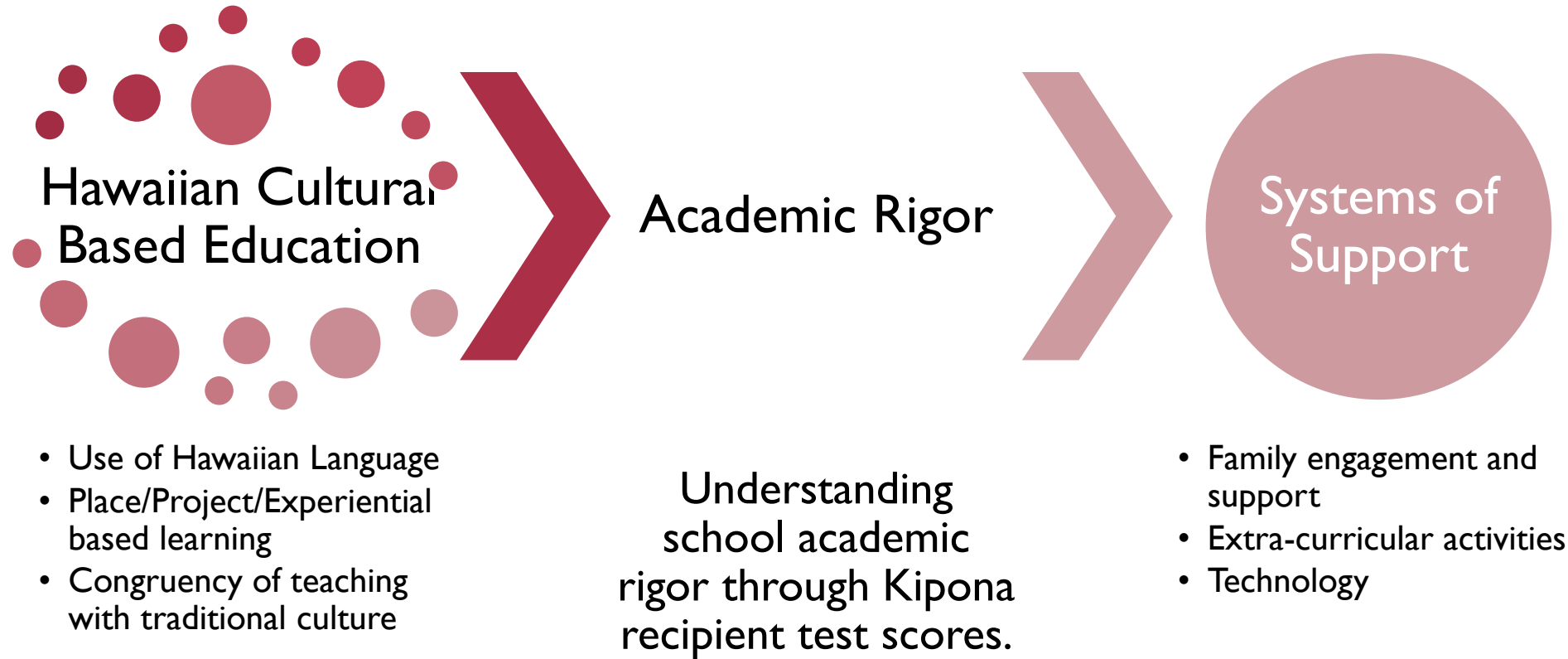
Ho'omau

To preserve and perpetuate

Ha'aha'a

To be humble

KS STRATEGIC ALIGNMENT



SCHOOL COLLABORATOR EXPECTATIONS

- Apply annually for Kipona participation
- Understand that KS may remove any school from participation at any time
- Submit published rates by July 31
- KS will not adjust award if tuition rates increase after the application deadline
- Provide student academic assessment results to verify academic progress
- Provide enrollment confirmation to KS by August 31
- Understand that disbursements are contingent on school and family requirements
- Final disbursements for each academic year are made no later than May 31
 - Grades K to 5: Award amounts up to \$7,000
 - Grades 6 to 12: Award amounts up to \$9,000

SCHOOL COLLABORATOR EXPECTATIONS

- Student retention in school program are the responsibility of parent and school.
- Awards are paid to the school on behalf of the student.
- Schools must provide adequate volunteer opportunities to families.
- Schools will allow KS to take photos of students for marketing purposes.
- Families who do not meet KS requirements may be terminated. KS will notify schools.
- Schools are not allowed to market KS, its logo or likeness.
- Schools will return any unused funds to KS within 30 days of change (e.g. withdrawals, disenrollment)

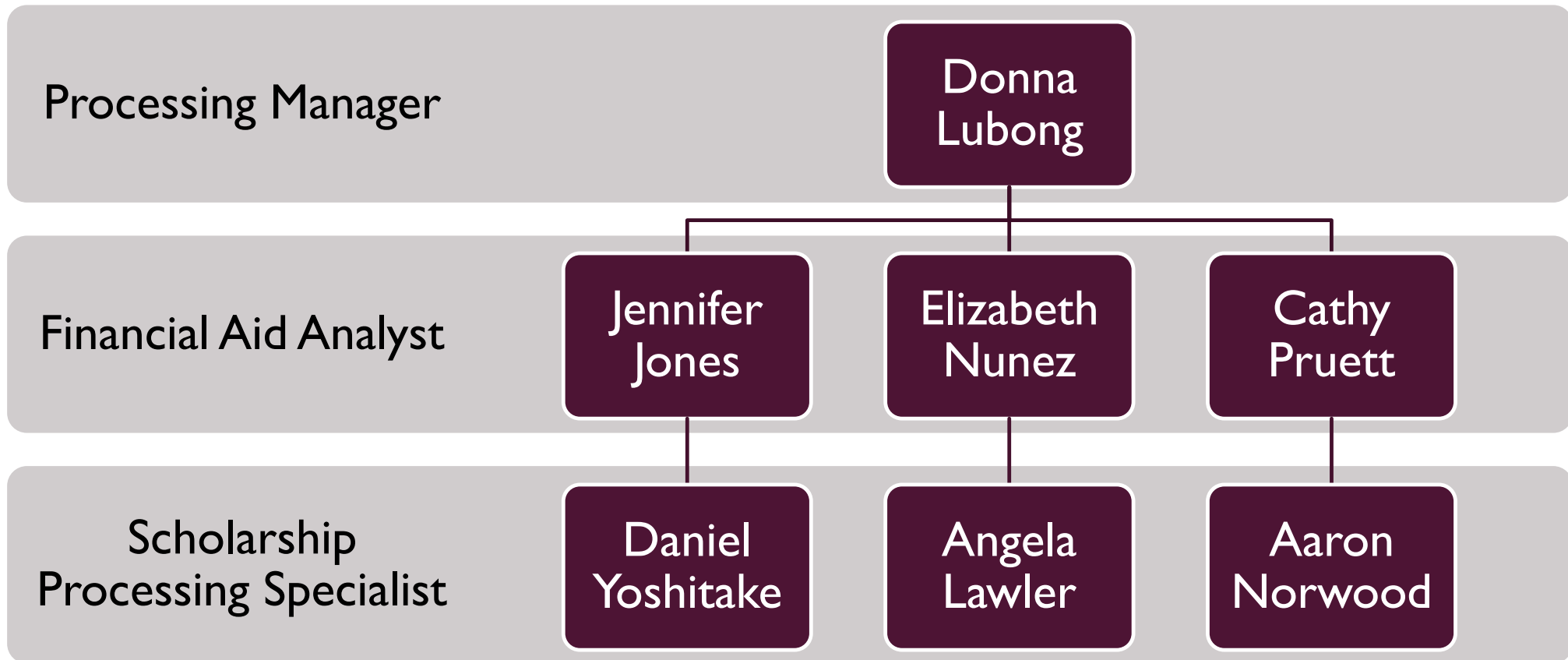


Kamehameha Schools

KS PREK 12 TEAM

- PROCESSING TEAM
- BUDGET & AWARDS TEAM

KS PREK-12 PROCESSING TEAM



KS PREK-12 BUDGET & AWARDS TEAM



- ❑ KIPONA SCHOLARSHIP (family)
- ❑ School Collaborators (A-Kc)
- ❑ KS Financial Aid Program

Patti Rabacal
Phone: 808-534-8088
Email: parabaca@ksbe.edu



- ❑ PAUAHI KEIKI SCHOLARS (family)
- ❑ School Collaborators (Kd-Z)
- ❑ KS Financial Aid Program
- ❑ KS Summer School Financial Aid

Cherish Lum
Phone: 808-523-6264
Email: celum@ksbe.edu

