

A visit to the Bernice Pauahi Bishop Heritage Center



This book belongs to

write your name

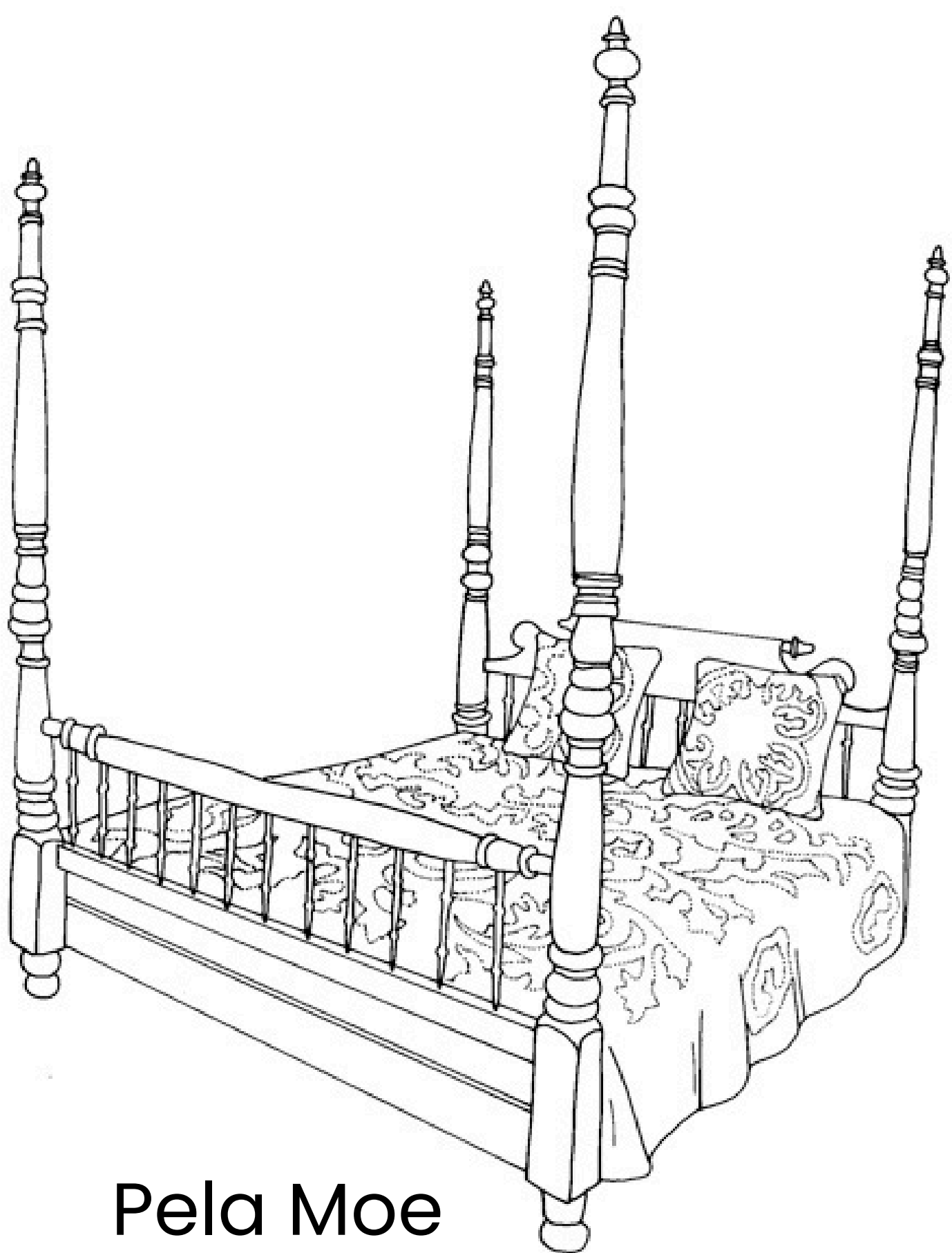
Today we are going to visit the

Bernice Pauahi
Bishop Heritage
Center

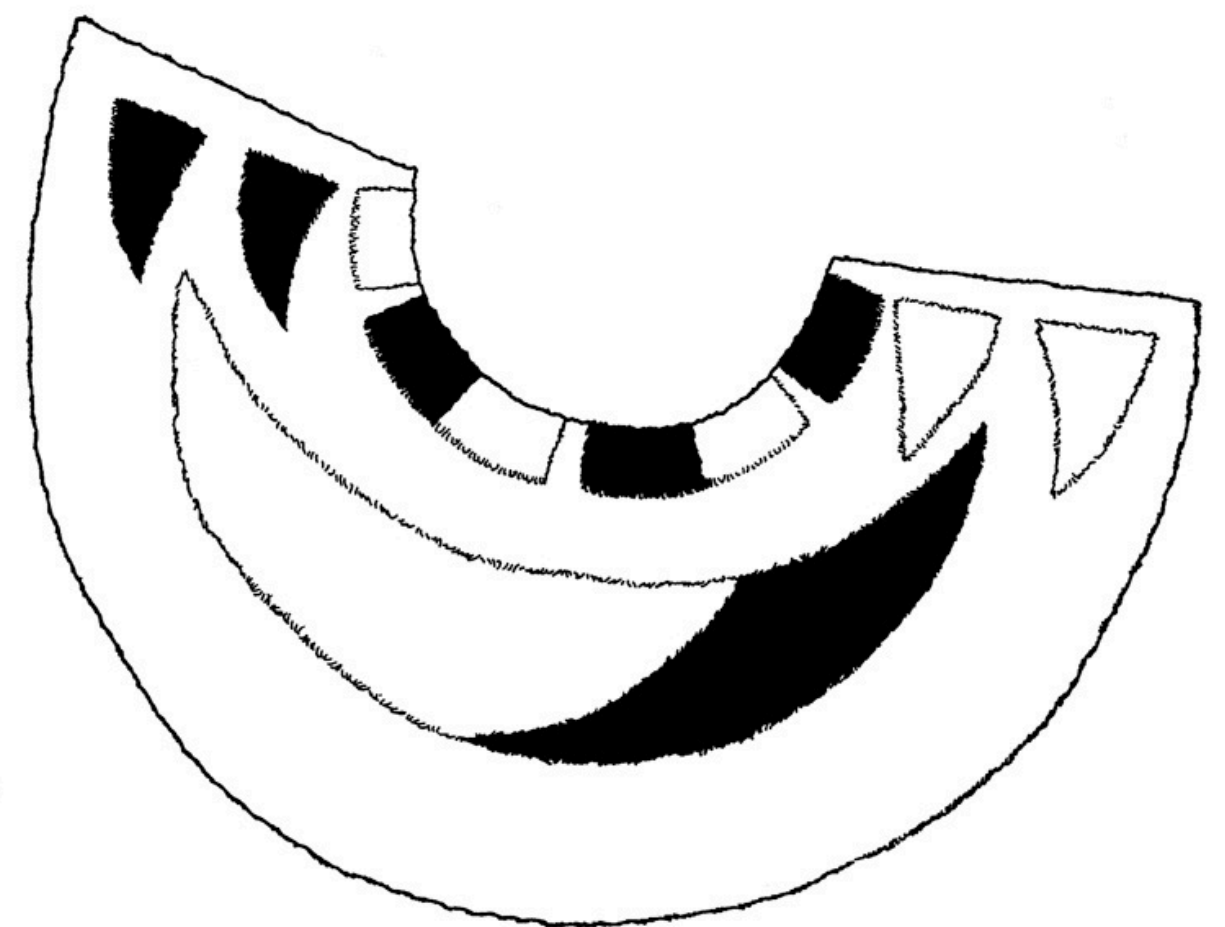
**When you are ready, say
“mākaukau” and go on to the
next page.**

Inside the Bernice Pauahi Bishop Heritage Center we will see lots of things that belonged to ke Ali'i Pauahi and her husband Charles Reed Bishop.

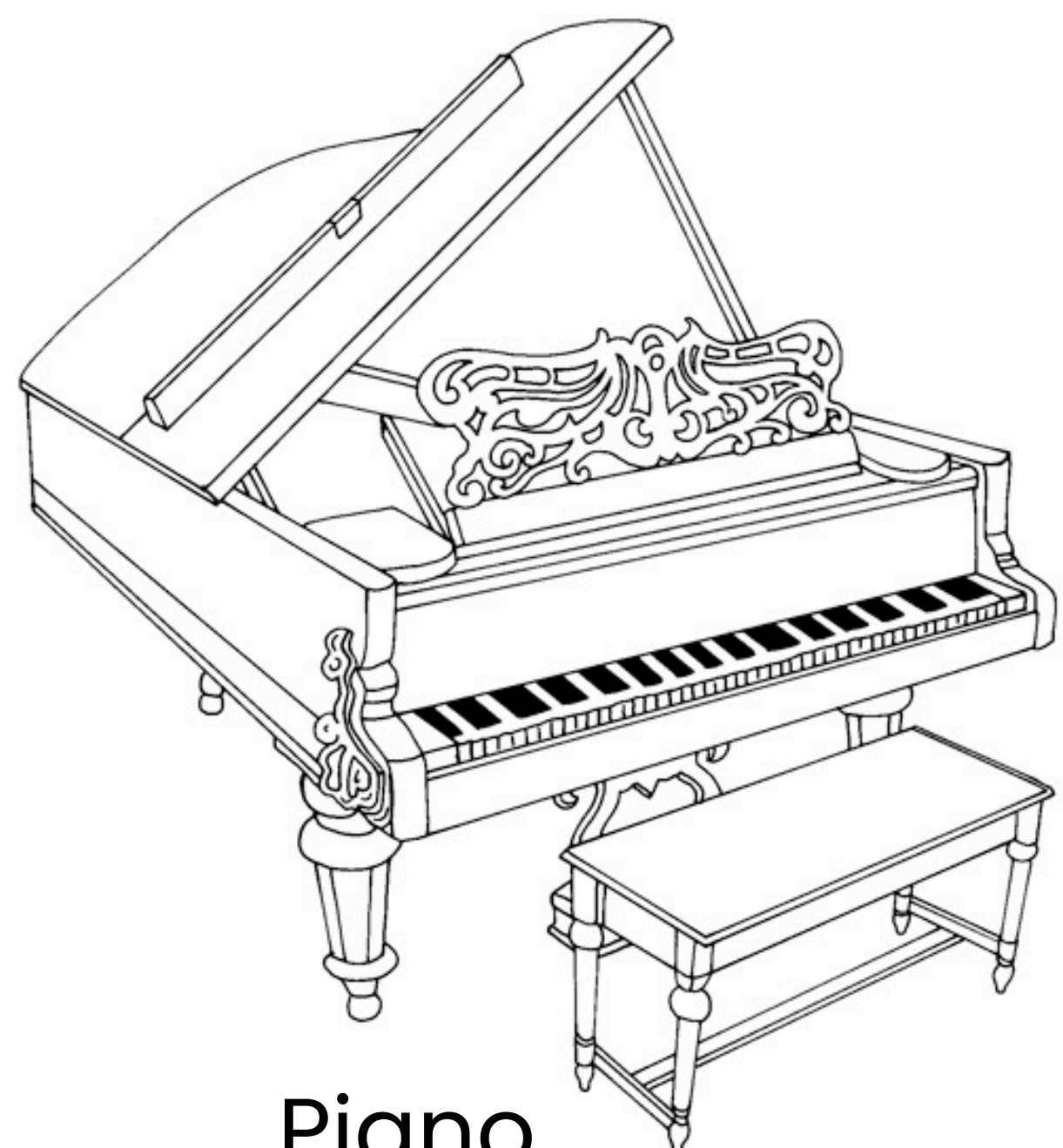
Color some of the items that we'll see and then let's learn a bit about Ke Ali'i Pauahi before we go inside.



Pela Moe



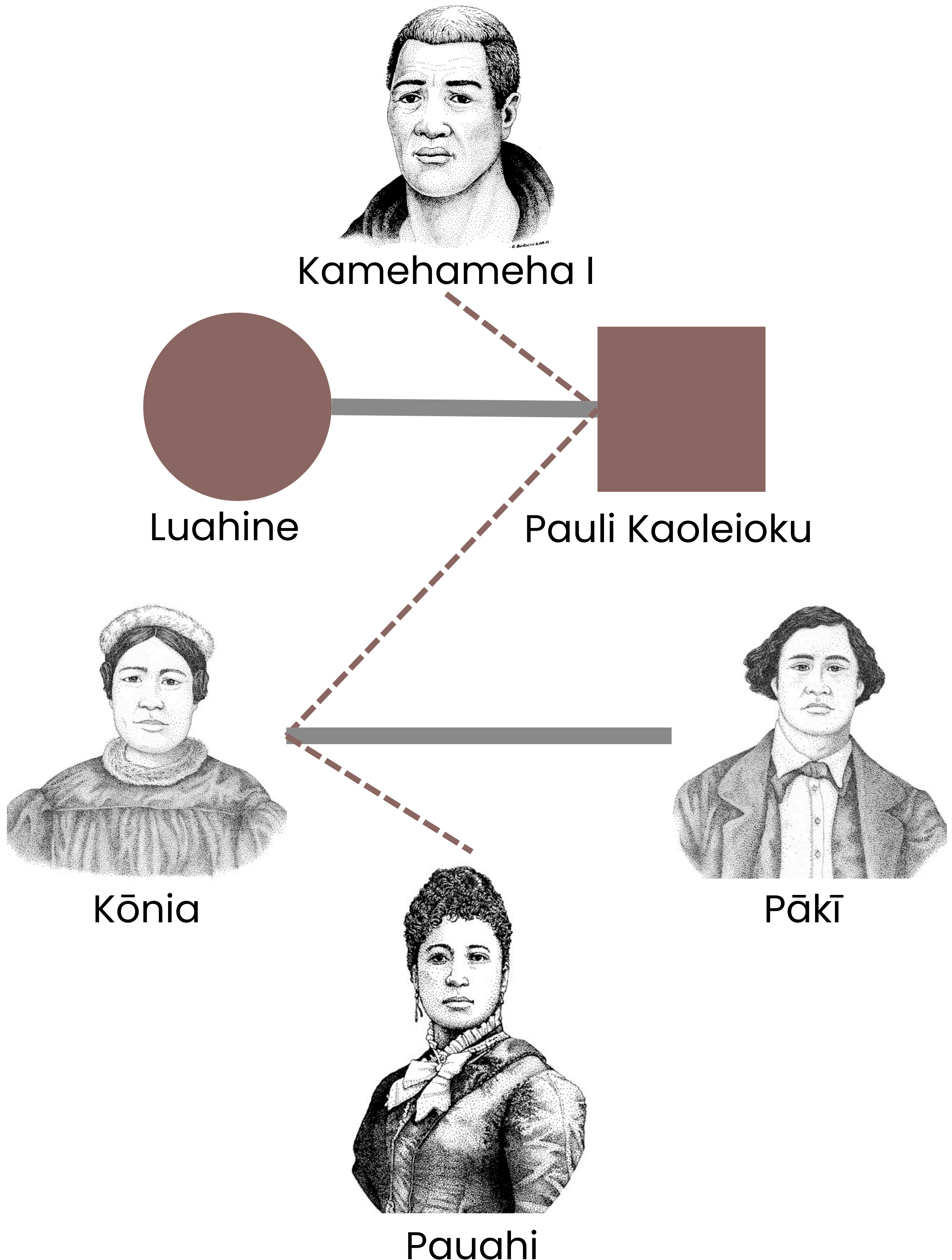
Kīpuka
Kahanakalani (replica)



Piano

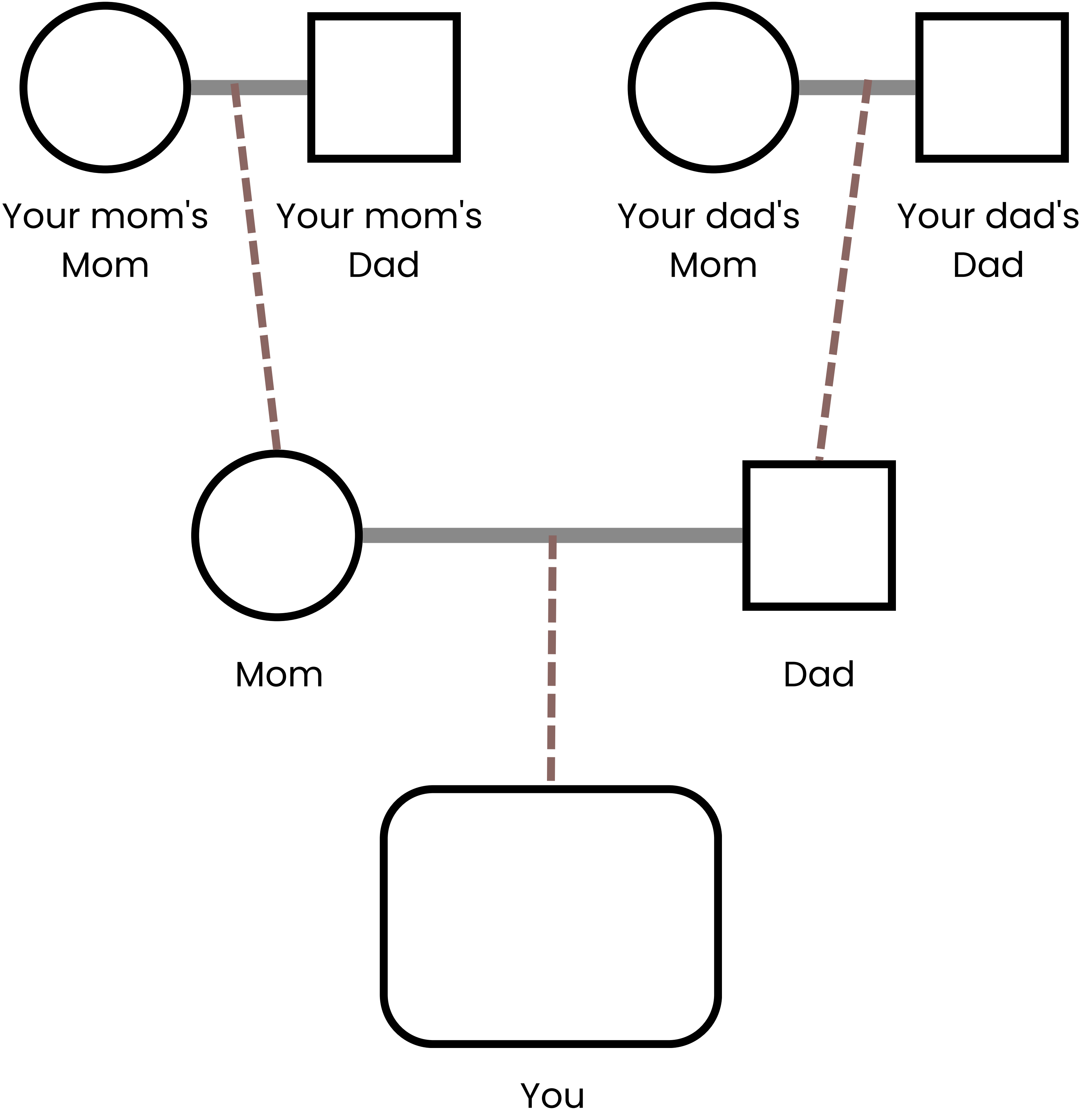
Mo'okū'auhau

Do you remember ke Ali'i Pauahi's mo'okū'auhau? Follow the dotted line to connect King Kamehameha to her. She is Kamehameha's great-granddaughter.



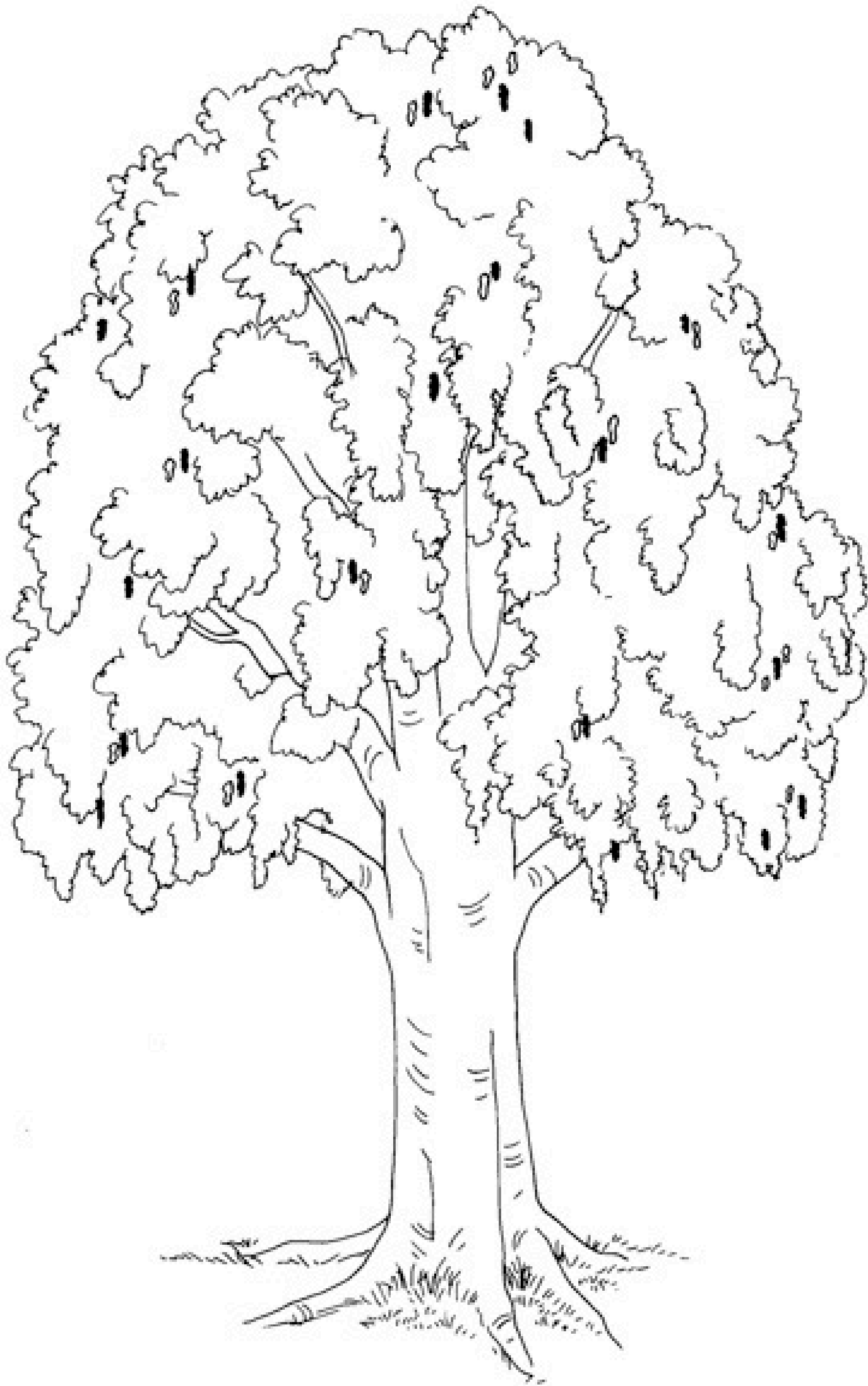
Kou Mo'okū'auhau

What is your mo'okū'auhau? Draw pictures or cut some out with your parent and glue them in the spaces below.



Tamarind

When Pauahi was born, her mākuā planted her 'iēwe under a tamarind tree outside of Haleakalā. Years later, when Pauahi and Charles lived there, she would spend time under that same tree talking with her people.



Lawe Hānai

When Pauahi was born she was given to her aunt, Kīnaʻu.
Kīnaʻu and her husband, Kekūanāoʻa, raised Pauahi in
their home.



Kīnaʻu



Kekūanāoʻa

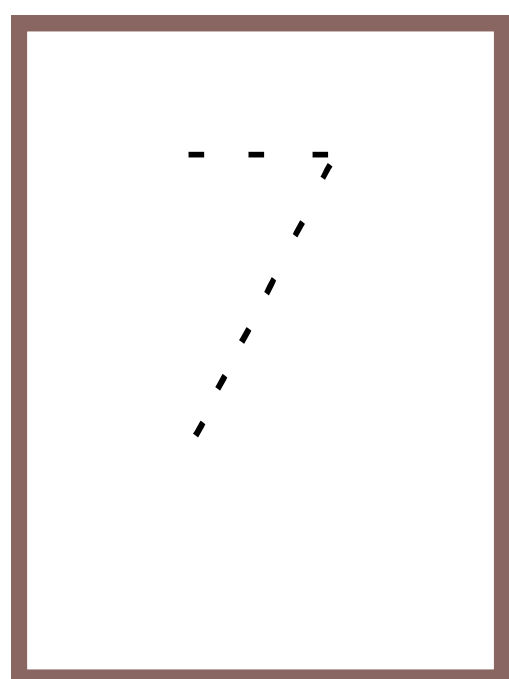


Pauahi

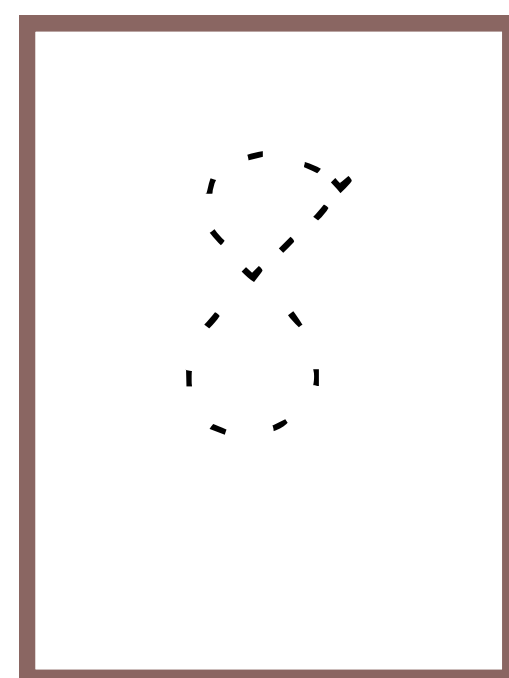
He Kula Ali'i

In 1839, King Kamehameha III set up a school for young ali'i to be taught about government. Below are some ali'i who attend the school. When Lili'u went to school she was 4 years old.

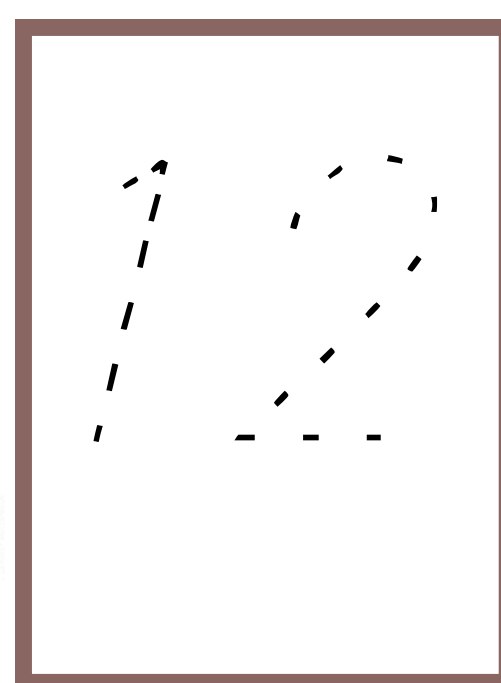
Trace the ages of the other ali'i who were at the school.



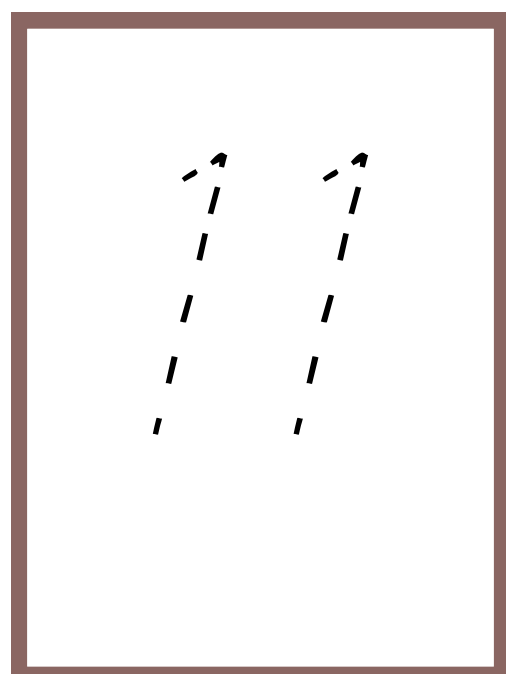
Lunalilo



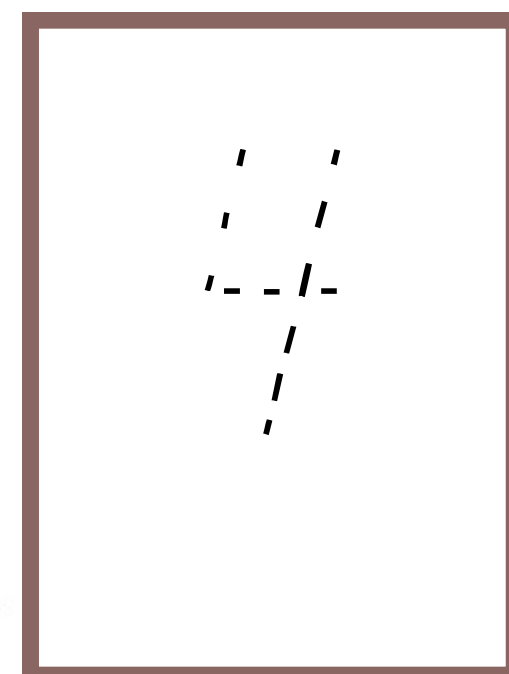
Alexander
Liholiho



Lot
Kapuāiwa



Pauahi



Lili'u

Lā Hoʻihoʻi Ea

In February 1843, a British sea captain came to Honolulu and threatened Hawaiʻi with guns. Kamehameha III was forced to surrender and the British flag was flown.



Five months later, on July 31 another British captain, Admiral Thomas, apologized and returned Hawaiʻi's sovereignty. Pauahi was 11 years old. She wrote and drew in her journal about what she saw, including the Hae Hawaiʻi!

Now it's your turn. Draw a Hawaiian flag below.



Ka Male 'Ana

Pauahi married Charles Reed Bishop. They lived in a home in Honolulu built by Pauahi's dad, Pākī. The home was called Haleakalā, house of the sun.



Haleakalā

Keōua Hale

In 1883, Pauahi and Charles moved and lived in Keōua Hale. This home was built by Princess Ruth Ke'elikōlani, Pauahi's cousin. Ke'elikōlani also gave Pauahi all the land that she owned.



Ke'elikōlani

Let's go inside!



The Bernice Pauahi Bishop Heritage Center was opened in 1987 to celebrate 100 years of Kamehameha Schools. Inside this building are some of Pauahi and Charles' things.

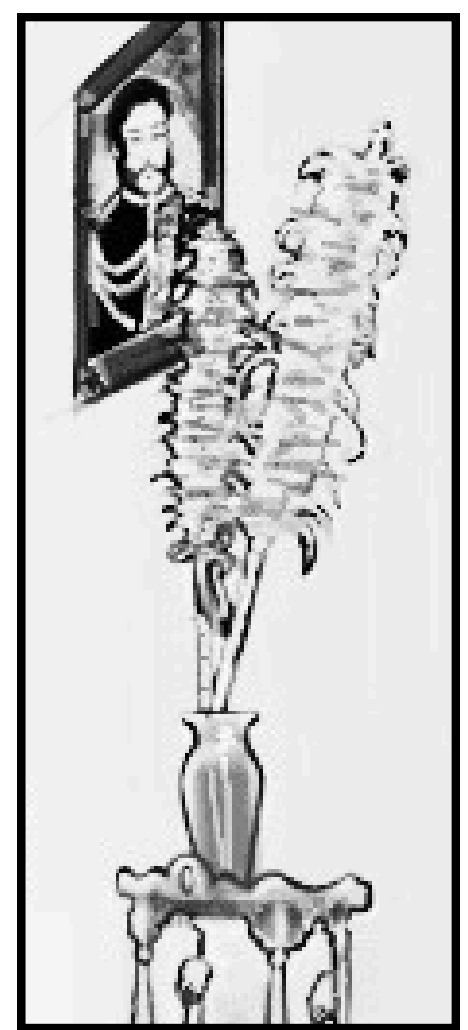


Scan the QR code below to take a tour of the Bernice Pauahi Bishop Heritage Center.

The Entryway

When you arrive at the Bernice Pauahi Heritage Center you will walk in through a large door. In this first room are many things. On the walls are portraits of Pauahi's 'ohana.

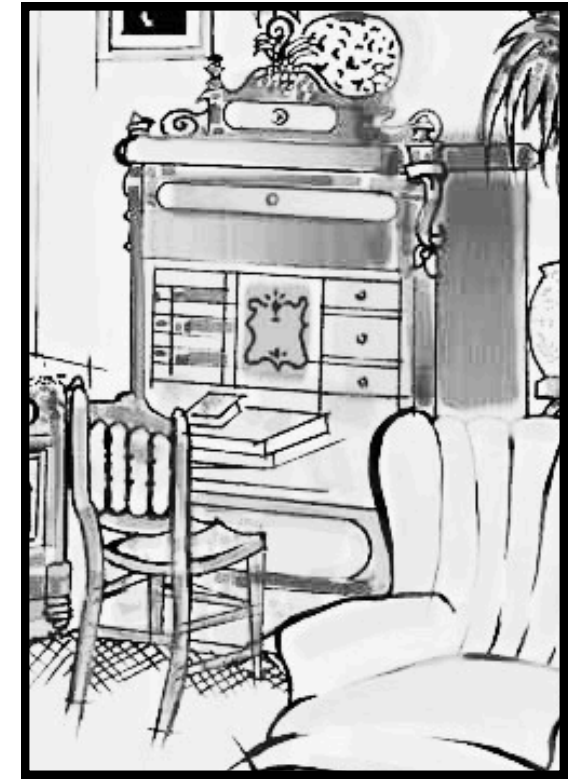
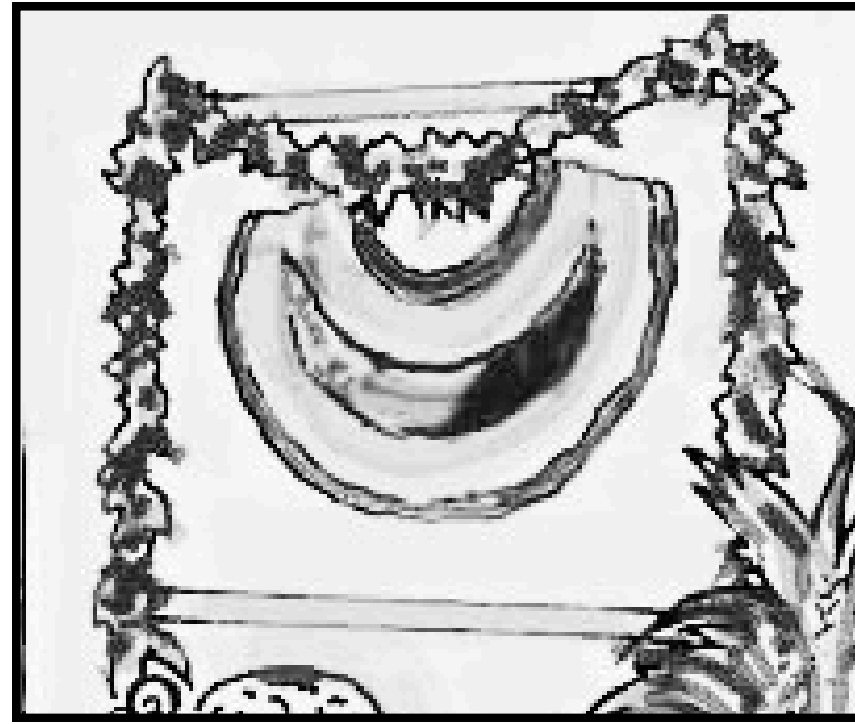
Can you find **Kamehameha I** and **Princess Ruth Ke'elikōlani**? Can you find **a leihulu** and a **pāpale**, and **two kahili pa'a lima**?



The Parlor

This is the parlor where Pauahi and Charles might have relaxed on these chairs as they read or talked story.

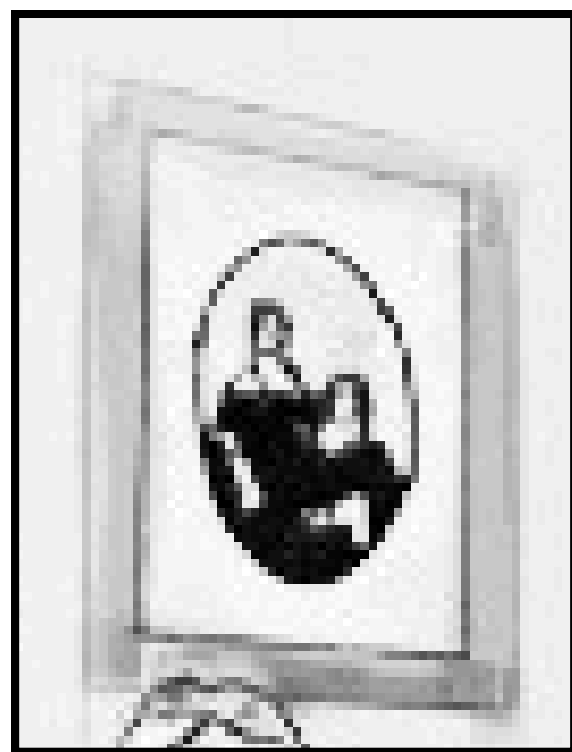
Can you find a **plant near a window**, a replica of **Pauahi's kīpuka**, and **Mr. Bishop's Bankers desk**?



Piano Room

This room houses a grand piano that Pauahi played. Guests who can play piano are welcome to play on the same piano!

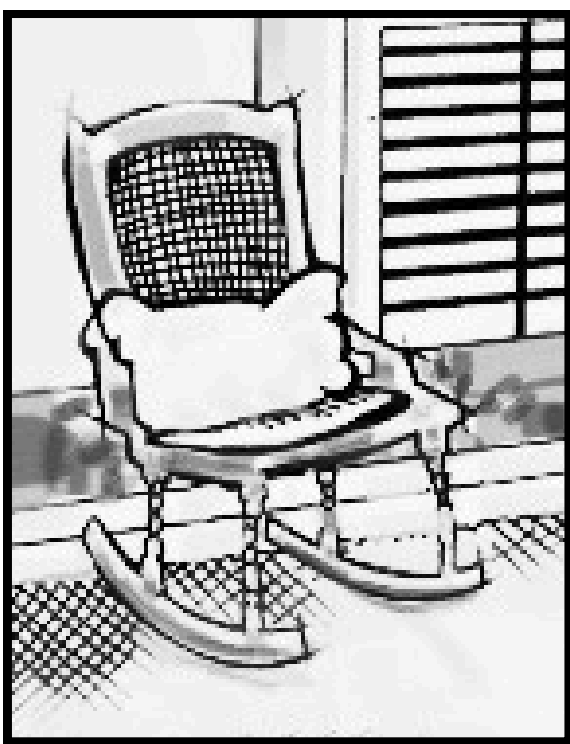
There are other items in this room. Can you find a **picture of Pauahi and Lili'u**, some **books on a shelf**, and a **painting of the Madonna and Child**?



The Bedroom

This is the bedroom. Do you see the big bed? That bed was made for Princess Ruth Ke'elikōlani and was given to Pauahi along with Keōua Hale.

There are lots of other things in this room. Can you find a **rocking chair**, a **pitcher and basin**, a **picture of Pauahi and Charles** and **Pauahi's dress**?



Notes.....

Notes.....



Kamehameha Schools®

PRESCHOOLS